

# **The History of St. Luke Lutheran School 1866-2016**

## **“Shaping Young Hearts and Minds for Jesus”**

In Proverbs 22:6, God tells us to “Train up a child in the way he should go and when he is old he will not depart from it.” The training that a child receives determines his spiritual, physical, intellectual, emotional and social development throughout his entire life. In Ephesians 6:4, we are told to bring up our children in such a way that not only are their physical needs met, but we are to care for their spiritual and intellectual lives as well. Our churches are to feed the little lambs of their congregations. In heeding all these admonitions, St. Luke Congregation for the past one hundred fifty years has fostered a Christian Day School.

Records are not complete before the year of 1903, so the early history of the school is not

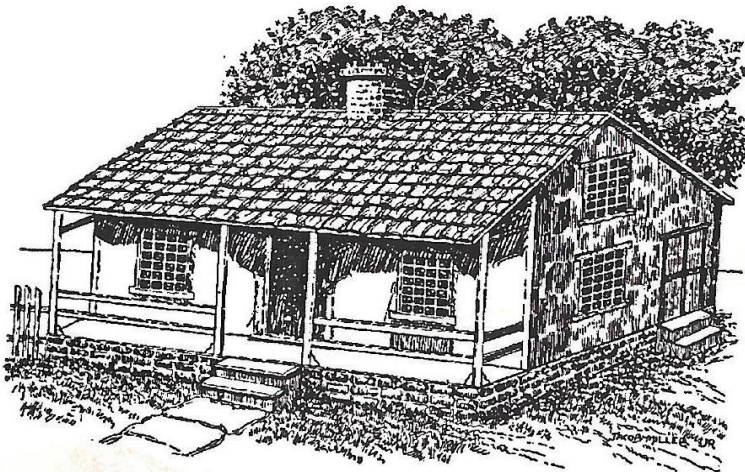
clear. We know that Lutheran church services were first held in the barn and house of the William Cooper family as early as 1817. Cooper and his family were devout Christians who had emigrated from Ireland. They allowed traveling ministers to hold divine services in their barn in summer and moved the little group into the cabin for winter services. In 1830, the wave of German immigration hit western Pennsylvania, especially the area in which we now live. The Cooper family continued to provide a place where these German newcomers could worship, and by 1835 the “Evangelical Lutheran St. Luke Church of Buffalo Township, Butler, County, Pennsylvania” was formed. Later when Jefferson and Winfield Townships were formed from

Buffalo Township, the name automatically became St. Luke Church of Jefferson Township. A piece of ground was purchased from the Coopers for \$1.00. On it was erected a simple church building and a cemetery was laid out.

Pastors came and went but always the little congregation felt that they wanted to open a school. Most of the members had been educated in church schools in Germany and they wanted their children educated in the same way and in the German language. German settlers wanted to keep their American homes as much like their beloved German homes as they could. Only German was spoken in their home and they saw no reason to have their children taught in public

schools where they learned no German. Furthermore, they did not always look in favor on the teachings and curricula of the public school.

Finally, in 1866, a pastor by the name of Adolph Pohl was called to serve the St. Luke congregation. Pastor Pohl was in favor of opening a school for the congregation's children. Land was purchased from Christian Opitz with the idea of using the house on the property as a parsonage. This house had a back room which Pastor Pohl immediately turned into a school room and school began in 1866. This room served as the school until 1874. Pastor Pohl served as pastor and teacher for about three years. Part of that time he lived in Chicora and walked to St. Luke.



*First Parsonage of St. Luke church and Christian Day School*

Records do not mention who served as teacher until 1871 when Rev. Freidrich Wilhelm became pastor and teacher. Rev. Wilhelm was a man of great energy who served St. Luke congregation and the Zion congregation in Summit Township, along with St. Matthew Church at Little Germany in Winfield Township and the Lutheran congregation at Freeport. Under Pastor Wilhelm the school term was established which began in October and ended at Easter. After Easter, classes were held each Friday from 8:00 a.m. until noon. German, reading, and writing classes were conducted in this Friday school. Along with all that, Pastor Wilhelm was instrumental in bringing Concordia Orphans Home to the area. Pastor Wilhelm taught the school until he could no longer handle such a tremendous load. His wife and her sister, both well-educated women, served as teachers when the pastor had duties which carried him away from the school. Several young men who were either students or ministerial candidates came and went during the years. Their main responsibility was to help with the school. This arrangement lasted until 1886 when a full-time teacher, Will

Mahlich, was called to teach. Mr. Mahlich was the first synodically-trained teacher to teach at St. Luke.

By 1874, the congregation had outgrown the plain board church which stood in our present cemetery and land was purchased to the east of the cemetery for a new church. A new church was erected and school was moved to the basement of the church. This room was small and had low ceilings. Part of the basement was not dug out and the children always feared that as punishment for some prank they would be shut in this unexcavated hole known as "das schwange look". A few years later the church members were given permission to erect sheds in back of the church to shelter their horses during bad weather. These sheds made ideal play houses for the school children to use during recess. In 1885, the first double desks were purchased at the cost of \$4.17 each. Previous to these purchases the children sat at long tables with benches for seats. The desks served until 1928 when they were cut in two and made into single desks and began a second life in St. Luke School.

In 1878 Henry Lensener, once a student at St. Luke, was called to teach. He served the congregation for nine years and then resigned to become director at Concordia Orphans Home. At Mr. Lensener's departure, the task of teaching fell on the shoulders of the pastor, Rev. Engelder.

In August of 1890, the congregation voted to build a new school at the cost of \$560. Buildings were erected quickly in those days and by October the building was dedicated and classes were held there. This school building is still in use. It has led a checkered career— from school to storage space, to a garage for the school bus, to its present use as a general meeting place. If only its walls could talk! How much we could learn about St. Luke that is now lost to us.

By 1897, the work of being pastor and teacher proved too much for Pastor Engelder and a new teacher was called. A fine Christian woman, Miss Bertha Flechenstein, accepted the call and served faithfully for several years. Pastor Engelder died very suddenly in 1903 and Pastor Theodore Andree became pastor. He also assumed the duties of teacher in the school. Until 1904, all classes in the school were conducted in German, but the move to start classes in English began. In 1904, confirmation instruction began to be held in both German and English. The parents made the decision as to in which language their children would receive instruction. The first year of this double instruction resulted in ten German confirmands and two English. In 1918, it was decided



***St. Luke School, built in 1890***

to discontinue the German instruction, but the students already being instructed in German were allowed to continue in that language. As a result, the last German confirmation class was in 1920. After 1920, the school was conducted in English, and German church services were held every other Sunday until the 1950's.

In 1899, the Young People's Society was given permission to hold their regular meetings in the new schoolhouse provided they followed certain regulations. Each person was to choose a desk and was to sit at that desk for every meeting. The boys sat on one side of the room and the girls were on the opposite side. Desks were not

to be marred in any way. Each program was to include Bible history or a study in geography or arithmetic. Debates, storytelling (two stories in German and two in English), dialogues, riddles, and questions and answers could be



***Rev. Theodore Andree  
1903-1919***



***Rev. Theodore Andree with his class from the early 1900's***

used as entertainment. On the way home, the members were to conduct themselves as Christians and not offend anyone.

The double job of minister and teacher was beginning to be too much for Rev. Andree and in 1912, Arthur Seils was called to teach. He did not like the country and resigned late in August of 1913. It was too late to acquire a synodically-trained teacher for the 1913-1914 school term, so Miss Louise Frederick, a member of the congregation, was hired to teach until June of 1914.

A call was extended to Master Martin Mueller to serve as teacher in 1914. He was a graduate of Concordia College at River Forest. In 1916, a big improvement came when a water well was drilled at the school. No longer did water have to be carried from the parsonage to the school. Mr. Mueller taught until 1917 when he was drafted into the Army. Again, Rev. Andree took over as teacher and taught until 1919, when Teacher Mueller returned to the teaching field. Mr. Mueller served as teacher until 1925 when he asked for, and was given a peaceful release. Since the pulpit was also empty

at this time, Vicar Ahrendt from the seminary in St. Louis was sent to teach and preach at St. Luke. This arrangement lasted for one year.



**Otto Nicol**  
*Installed on September 4, 1927*

In the spring of 1927, Rev. Walter Hofius became pastor and in September of the same year a young man by the name of Otto Nicol took over as teacher. A new era in education began at St. Luke as Mr. Nicol was a dedicated teacher and taught long and well for many years. Not only were the boys and girls taught secular subjects, but they learned the true values of being a Christian.

In 1945, ground was purchased across the road from the church for a new cemetery and also for a teacher's house. By 1948, a fine brick house was ready for occupancy and the Nicol family moved in.



St. Luke School was growing during these years. Members of the church who lived a distance from the school were no longer satisfied to send their children to our school for only two years of catechism instructions. They desired to have the children attend St. Luke for the entire elementary program. In 1954, a used school bus was purchased and the children were bused to their classes. It was in 1954 that a committee was chosen to look into the possibility of buying ground next to the church for the purpose of building a parish hall and new

school rooms. This committee consisted of Alfred Maurhoff, Walter Thiele, James Neubert, Clair Atkinson, and Mr. Nicol. Six and one-half acres to the east and south of the church property were purchased. At this time, the idea of consolidating Concordia Orphans School and St. Luke Day School was proposed. Nothing ever came of the proposal as the Orphans Home was phased out about this time.

In 1954, Rev. Hofius received a call to Fillmore, New York, and was granted his release. In July of that year, it was decided to expand the school to two classrooms. Pastor Louis Kaufman, who had succeeded Rev. Hofius, offered to teach the religious classes in the upper grades in order to help relieve Mr. Nicol's teaching load.

A Parish Hall and two classrooms were begun in 1956. As a temporary measure, the church basement was converted into a classroom. Mary Jean Borer, a supply teacher from Concordia Teacher's College at St. Paul, MN came to teach the first four grades of the school, while Mr. Nicol taught the upper grades in the schoolhouse.



***1956 Addition***

August 11, 1956 marked the 90<sup>th</sup> anniversary of the Day School. The old school was now converted into a garage for the congregation's school bus. In 1958, the operation of that school bus was discontinued as

the children were to be transported by public school busing.

In 1956, the Parent Teacher League was organized. One of their first acts was to have a strawberry festival and raise money to buy a ditto machine to replace the hectograph.

In March of 1960, Rev. Kaufman was released to accept another call. Pastor Gerhard Schmook accepted the call and was installed in August of 1960. He remained as Pastor until 1976 when he retired. Our school continued to grow and a third classroom was opened in 1961. Miss Joanne Eisenberg was hired to replace Mary Jean



***St. Luke Christian Day School and Church***



Borer Montag, who was given permission to hold a six-week Kindergarten class for the children who would enter school in September. Miss Wyanetta Timm from Niagara Falls, New York, was hired to teach the middle grades.



*Mary Jean (Borer) Montag  
September 1956*

September of 1962 found Miss Alma Gretta teaching the primary grades as Miss Eisenberg had been released to teach in Missouri. At the end of the 1962-1963 school year, both Miss Timm and Miss Gretta asked to be released.

God called Mr. Nicol to his heavenly home on June 3, 1963. His entire career in the teaching field had been spent at

St. Luke—a total of 36 years. A memorial fund in his honor was established by the congregation. The fund was to be used to further the church's educational program. The fund became the O. J. Nicol Memorial Library, which is now a reality.

Mr. Francis Camann was called to serve the school as principal and teacher of the upper grades after Mr. Nicol's death. Mr. Kenneth Hinz, a River Forest graduate from Wisconsin, accepted the call to teach the middle grades. Miss Ruth Lobeck, an undergraduate from River Forest, Illinois, came to teach the lower grades. An experimental hot lunch program was tried but was discontinued because of a lack of space and expenses involved.

In 1965, the Spring Kindergarten was extended to



*First Kindergarten Class*

nine weeks, with several faithful helpers coming each day to help during those busy mornings. A graduation exercise with caps and hats was the highlight at the end of the nine weeks.

With the passage of the School Bus Transportation Act by the State of Pennsylvania in 1965, St. Luke was provided partial transportation by South Butler Jointure Schools. A shuttle bus system, to complete school transportation, was arranged under congregational contract. Also as a result of the Elementary and Secondary Educational Act of 1965, special funds for library books, audio-visual materials and a Reading Specialist were made available. On Sunday, August 28, 1966, a Centennial Celebration of the Day School was observed. The day was marked with a special worship service and a congregational fellowship dinner. The next day, Mr. Camann announced that he had accepted a call to St. Paul's, Luxemburg, Wisconsin. He asked for and received a peaceful release. School began the next morning with Mrs. Alex Simpson as upper grade substitute. Mr. Kenneth Hinz was asked to be acting principal.

A call was extended to Mr. Robert Flesch, a Seward graduate, who was serving as Minister of Education and Youth at Walnut Creek, California. He accepted the call and was installed on January 15, 1967, as teacher of the upper grades. In the fall of 1967, Miss Lois Boyer, a River Forest graduate, came to teach the lower grades and replace Miss Lobeck; Mr. Flesch was extended the call to be the principal. In the spring of 1968, kindergarten was extended to 12 weeks. Mr. Flesch served as principal until 1970 when he asked to be released to pursue a Master's Degree at Seward, Nebraska. Mr. Bruce Walkmaster was called as principal and teacher of the upper grades and arrived in August of 1970.

St. Luke had a beautiful wedding on December 26, 1970, when Miss Lois Boyer and Mr. Kenneth Hinz became husband and wife. Kindergarten became a full year in 1971 when the local school district had a full year for the first time also. Mrs. Hinz took a year off and Miss Mona Bornhoeft replaced her for the school year of 1972. Mr. and Mrs. Kenneth Hinz left in the

summer of 1973, as did Mona Bornhoeft.

Mr. Kenneth Schroeder and Miss Phyllis Theilke were called for the fall term of 1973. Mr. Schroeder taught third and fourth grades, and Miss Theilke taught fifth and sixth grades. Mrs. Montag returned to teach kindergarten, first, and second grades with 41 students in the classroom each morning until the kindergarten left at noon. There were now four classrooms.

Mr. David Dembeck was called to replace Miss Theilke, who had stayed one year. He brought along his wife, Valorie, a teacher, who was a welcome sight to Mrs. Montag. Mrs. Dembeck became the kindergarten teacher in 1974 which allowed first and second grades to be alone in one room. The basement of the church was used for the new classroom; this allowed for five classrooms.

In 1975, preschool was added for the first time. Valorie Dembeck taught both in the church basement— kindergarten in the morning and preschool in the afternoon.

Bruce Walkmaster was called to Clinton, Iowa as a D.C.E. and left in the summer of 1975. Kenneth Schroeder was extended the call to become principal of St. Luke. Mr. Mike Henkes, a River Forest graduate, was called to replace Mr. Schroeder for the middle grades.

Mr. Henkes left in the summer of 1977 and Valorie Dembeck was extended the call to be third and fourth grade teacher. Mrs. Nancy Sander was hired to teach preschool and kindergarten in 1977 to replace Mrs. Dembeck.

The Supplemental Materials State Aid Act was declared unconstitutional in 1977. The school was able to keep anything under \$100 and to pay 10% of the original cost of items more than \$100. It was also the year in which the remedial math and reading teachers were not allowed to teach in the building. The system of vans from the Intermediate Unit in Grove City began, in which the children left the building to go to the van for instruction.

In the summer of 1979, Valorie and David Dembeck received a call to Michigan, which they

accepted. A call was extended to Mark and Cindy Wilt to teach grades three through six. Because these changes took place so late in the summer, school actually started one week later than originally scheduled. In the middle of the 1979-80 school term, Nancy Sander, the kindergarten and preschool teacher, moved because her husband, a pastor at St. Mark's Lutheran Church in Butler, accepted a call to another congregation. Mrs. Karen Doerr was secured as her replacement for both the kindergarten and the preschool.

In September of 1980, Ken Schroeder received a call to California; Cindy Maier was hired to teach seventh and eighth grades for that year and Mark Wilt was asked to be principal.

In December of that year, the congregation voted to dismiss the pastor. Upon this action, a group of St. Luke members left to form a new congregation, which is now Faith Lutheran Church in Butler. Several families also withdrew their children from the school at that time.

Since Mrs. Maier was temporarily teaching for the

year, in the spring of 1981 a call was extended to Miss Cheryl Honoree, a Seward graduate. Miss Honoree instructed the seventh and eighth graders. In the fall of 1981, Miss Karen Shearer was hired for one year to replace Mrs. Wilt who resigned to raise a family.

Following a tradition started in the early '70s, a nature club was formed at St. Luke which entailed after-school meetings in the spring, and a camp-out as well as Science Nights for the lower grades in the fall.

One of the important ministries of the school children is the sharing they do with the folks at nearby Concordia Lutheran Home. Each of the classes goes to the Home for individual visits or programs. A special bond develops between the children and the elderly throughout the year by the exchanging of cards, as well as other personal notes and visits. At Christmas time, in years past, the entire school used to present their Christmas service to the residents of the Home.

In the spring of 1982, St. Luke extended a call to Rev. Barry Keurulainen, which he accepted. This was to fill a vacancy which had existed for

18 months. At this time a call was also extended to Miss Brenda Fett to teach grades three and four.

For the 1983-84 school term, a double session kindergarten was held because of a large influx of students. Mrs. Doerr instructed both kindergarten sessions, and Mrs. Andie Keurulainen was hired as the preschool teacher. As our enrollment began to expand, so did the programs here at school. With more and more specialties becoming a part of school life, a gym teacher, art teacher, and instrumental music teacher were added to the staff. Through fundraisers and private gifts, handbells were purchased. Handbell classes were begun weekly for the sixth through eighth graders.

Because of the large kindergarten enrollment the previous year, the congregation voted to hire an additional teacher. This kindergarten class advanced to a single-grade setting in grade one, with Mary Jean Montag as instructor. Mrs. Cynthia Maier was hired to teach the second grade and part of third grade. Since all the school rooms were occupied, the old school was renovated

and housed 21 fifth and sixth graders during the 1984-85 school term while the church basement was occupied with grades seven and eight.

Although renovated, the old school house maintained much of its original charm. The children sitting along the west wall on cold and windy days were able to hold their papers against the wall and exclaim as their papers blew gently in the draft, "Gee, Mr. Wilt, it's cold over here!" Several times there were unexpected visitors under the schoolhouse that left strange and powerful aromas for several days to follow.

With school space at a premium, in January, 1984 the Voters approved a plan to alter the present church building and add an additional wing with five classrooms, a gymnasium, library and kitchen.

On March 31, 1985, ground was broken for the new building, Mrs. Bertha Nicol, widow of former principal/teacher, O. J. Nicol, turned over the first shovelful of dirt. On February 9, 1986, the new school building was dedicated.



***Left to Right: Pastor Barry Keurulainen, Michael Lang, David Yeager, Reuben Clowes, and Bertha Nicol***

***Ground Breaking  
March 31, 1985***



***Construction for the 1986 Addition***

Through the years, one of the students' favorite events has always been Track and Field Day. That's when we gather together with the other Lutheran schools in the Pittsburgh area for a little friendly competition. After a long drought, the overall trophy returned to St. Luke in 1985 and has remained since, with the children winning the trophy each successive year.

For the 1987-88 school year, Mr. Horst Kannenwischer was called to replace Cheryl Honoree in grades seven and eight. Once again, a double-session kindergarten was held, with the long-range goal of being able to expand to a single-grade setting. Since Mrs. Doerr also left at that time, Mrs. Keurulainen was called from the preschool to be the kindergarten teacher; Mrs. Wilt taught the preschool for that term.

With the school and preschool continuing to grow, Mrs. Janet Toth and Mrs. Kathy Wimer came to St. Luke to head up our preschool program for the 1988 school term. Since that time, the preschool has continued to grow.

The 1989-90 school year saw another "first" for St. Luke School—our first yearbook, which was dedicated to Mrs. Hilly Schmoock, wife of former Pastor Gerhard Schmoock and strong supporter of Christian education.



**Left to Right:** Mark Wilt, Hilly Schmoock and Marjorie Montag

#### ***First Yearbook Dedication***

The late winter of 1993 brought the "Storm of the Century" to the Eastern United States,



**Mr. Wilt digging out the school**



***Newly Renovated Old School House***

burying Cabot and St. Luke under more than two feet of snow. Students were delighted to have an entire week of snow days, as everyone scrambled to dig out after this historic weather event.

A growing student population had the current building bursting at the seams, so the 103-year old school house was once again called into action. After many, many hours of hard work and sweat, faithful volunteers finally completed renovations in the nick of time for the beginning of the new school year of 1993-1994. The structure was insulated, new windows and doors were installed, and wainscoting below wood paneling

transformed the interior. An addition was built by James D. Miller & Sons Construction, providing for girls and boys restrooms. Our seventh and eighth graders eagerly made the old schoolhouse their own and put it through its paces during the 1993-94 school year.

The refurbished building was used as a classroom until 2002 when the new education wing was built. The old schoolhouse presently is being used as a Bible study room, Youth gathering place, and meeting space. Hopefully, the rejuvenated building will last for another 100 years of faithful service.





***1986 School Addition***

As the school continued to grow, so did the need for some specialized classes. An advanced science class, Introduction to Physical Science was begun. A basement room in the 1986 addition was converted into a science lab and Mr. Lee Hoovler, a retired high school science teacher was hired to be our first IPS instructor.

With considerable growth of the school, the cost of the school continued to grow as well. Member tuition was instituted in 1996.

Subsequently, because of rising costs and tuition increases, our scholarship fund, Plant-A-Seed, took on an additional role. Not only was it assisting non-members, it was now also helping members. The fund's

purpose has always been to help families who desired to send their children to St. Luke Lutheran School but could not afford the full tuition. The congregation reaffirmed its commitment to the school by stating that no child be denied a Christian education due to financial reasons. In addition to all of the private donations to Plant-A-Seed, one of the early supporters of this fund was the Plant-A-Seed Golf Outing. All proceeds from the outing were placed directly into the fund. This year marks the 23<sup>rd</sup> year that the outing has been held.

In, 1997, with classroom space again at a premium, two used classroom trailers were purchased and placed behind the school. Ramps were



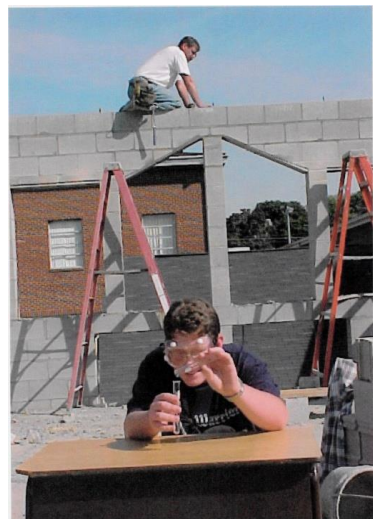
**Ground Breaking  
February 4, 2001**



**Dedication Dinner  
February 10, 2002**

constructed for access and the trailers served the school well until the 2002 addition was built.

With every inch of space being used for multiple purposes, the congregation began exploring building options. On December 4, 2000, at a special Voters Meeting, Building Committee Chairperson, Mr. Bill Gillespie presented a three-phase building plan to the assembly. Approval was given to begin



**IPS Science Lab under construction**

Phase I, a 25,000 square foot education wing to be added to the south side of the building at a cost of approximately 1.6 million dollars. Ground breaking ceremonies were held on February 4, 2001. Finally, almost a year to the day, on February 10, 2002 the new building was dedicated. The addition consisted of seven classrooms, a science lab, a computer lab, and library. In the basement were three additional classrooms that were not finished in an effort to save money. During construction the congregation pitched in with a great deal of volunteer help. Most notable were Mr. Jim Sleigh and Mrs. Gwenn (Timothy) Neubert, who headed up the painting crew, Mr. Rick Doyle, who built all the library shelving and Mr. Kevin Tasker, who built the bookcases for the classrooms.

The three unfinished rooms in the basement did not remain unfinished for long. Shortly after the dedication, volunteers were recruited and the three rooms and two bathrooms on the lower floor were finished. Mr. LeRoy Henry led the crew who installed all the flooring and before long the rooms were full of children.

As St. Luke School moved on into the future in this fresh, modern facility, the end of another era was duly noted. After 45 years of faithful service, Mary Jean Montag retired at the end of the



***Donald and Mary Jean (Borer) Montag***

2000-2001 school year. An evening of reminiscing in the form of a friendly and loving “roast” and a family picnic in her honor was held over the weekend of June 9 & 10. Mrs. Montag instructed three generations of students at St. Luke since 1956, in many cases teaching students, and later their children and then their grandchildren. Many new programs were introduced to the church and school thanks to Mrs. Montag—Orff instruments, Confirmation Mentoring, Kids Club, and Operettas, to name only a few. A Christian school is only as good as the message it teaches and the instructors who teach

the message. There is no better example of a faithful servant than Mary Jean Montag, whose devoted service continues to impact future generations in many ways. As of this writing, it is noteworthy that we have four alumni (and former students of Mrs. Montag) on our school staff—Mrs. Angela Hawley Turner ('92), first grade teacher, Mrs. Judy Ambrose Abernathy ('90), second grade teacher, Mrs. Susan Klein Ambrose ('72), school secretary, and Mrs. Linda Clowes McCall ('67), Pre-K teacher. We are truly blessed that these graduates of St. Luke Lutheran School have been led by God to return and serve here as their vocation.

Changing times brought more improvements and enhancements to St. Luke. Being blessed with lots of acreage, it was decided that a field below the barn could serve a greater cause. With that in



***Soccer Field***

mind, a soccer field was added to the campus in 2006 funded by the newly-established Annual Fund. A great deal of excavation was necessary to make a level field in the area between the old barn and the cemetery. A walking/running track was also installed around the perimeter at the same time.

The following year, once again thanks to the Annual Fund, a picnic pavilion was built adjacent to the Wilhelm House. The pavilion is used for multiple



***Constructing the New Picnic Pavilion***

purposes, including Saturday evening worship, picnics, and all sorts of outdoor recreation by many groups from the church, school, and community.

In the summer of 2007, a large billboard declaring a "Truly Higher Education" at St. Luke School was attached to the

back of our “old barn” along Hannahstown Road. This purposeful statement defines that not only do we seek to provide excellence in academics, we hold fast to our primary goal of teaching God’s Word in its truth and purity. At the same time, through the generosity of Mrs. Pearl Doerr Clowes (’46), a strip of land was provided on Route 356 to erect a full-size, permanent, double-sided billboard advertising the same.



***New Billboard on the back of the Old Barn***

With the continued growth of the school, four endowment funds were established.

Through the generosity of Vernon and Lois Neubert, the Willis F. Follstaedt Memorial Scholarship Fund was founded with the purpose of providing aid to worthy students as they seek a college education. In

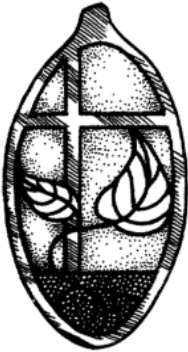


***Willis F. Follstaedt***

order to be eligible for this scholarship, the endowment stipulates that applicants must be graduates of St. Luke Lutheran School and current active members of the congregation. As motivation in establishing this fund, Dr. Neubert expressed his appreciation for the fine education he received at St. Luke Christian Day School and the aid he had received to fund his own education through scholarships such as this one. Dr. Neubert also hoped to pay a fitting tribute to his childhood friend, Willis F. Follstaedt and the fond memories of their times together at St. Luke.

The Plant-A-Seed Scholarship Fund is dedicated to helping families who wish to send their children to St. Luke School, but cannot afford the tuition.

Monies given to the fund have assisted in paying the tuition costs of families in financial need since 1992. This allows all families the opportunity for a Christian education, and does not limit it to only those with



the ability to pay. Plant-A-Seed's purpose is to make sure that none of God's little lambs are ever prevented from attending St. Luke Lutheran School for lack of funds.

The Mark A. Neubert Memorial Endowment Fund was established in 2009 in loving memory of this St. Luke



**Mark A. Neubert**

graduate and devoted supporter of Christian education. This fund's purpose is to assist the congregation in the funding of her school. The interest from gifts and bequests given to this fund directly go to offset the cost of the school, helping to keep the tuition rate affordable for all. A portion of the interest may also be used for school enhancements.

In 2012, retired St. Luke School instrumental music teacher, Mrs. Sharon Perschke and her husband, Dr. Tim Perschke saw fit to bless the children of St. Luke with the creation of an endowment fund to provide for those families who cannot afford to pay the entire cost of music lessons and help with the cost of enhancing the music program at St. Luke School. The Little Maestro Music Fund assists in paying the costs of



**Sharon Perschke playing the Flute,  
Diane Beckstead playing the piano**

student lessons, purchase, repair and maintenance of school instruments, as well as sheet music, music stands, equipment and curriculum.

Since our last celebration 25 years ago, there have been many dedicated teachers who have served at St. Luke.

Cynthia Wilt took her leave in 2012, after serving in a variety of classrooms over the years, since arriving at St. Luke in 1979. On June 15, 2015, after 32 years of dedicated service sharing His Word and teaching children here, Mrs. Andie Keurulainen retired. Many other teachers have blessed our children as well, some for just a brief time, others for many years. Their years of service and devotion helped to shape and mold the lives and faith of countless children. There is a listing of all the teachers and pastors who have served at St. Luke in the back of this book. We have been blessed by all of these faithful servants and the blessings continue to grow in the hearts of all who have been touched by them.

“Tell it to your children, and let your children tell it to their children, and their children to the next generation.” Joel 1:3. This Scripture conveys our focus

for the 2015-16 school year, “Shaping Young Hearts and Minds for Jesus.” Sharing God’s word through the generations has been occurring at St. Luke Lutheran School for 150 amazing years of educating God’s children and preparing them for service in His world! What a wonder it is to look back through the years and ponder how many little hearts have been touched through a Christ-centered education. We have celebrated this marvelous gift in various ways throughout the year.

During the weekend of September 13, 2015, Rev. Willis McCall, (class of '95) was guest preacher at all our worship services. Following Sunday worship outdoors in the pavilion, a Church and School Family picnic was held on the grounds with pony rides, a bouncy house, balloon release, and games for all. This event marked the kick-off for the school’s 150<sup>th</sup> anniversary year. Special monthly events were planned throughout the school year including a concert, featuring the Christian band, *About A Mile*. Band members, brothers Adam, Luke, and Levi Klutinoty, are all former St. Luke students. Another affair brought alumna and former

preschool teacher, now professional vocalist, musician and actress, Becki Toth ('88) to share and entertain.

Throughout the year of the 150<sup>th</sup> celebration the focus for the students and their families was Spiritual Disciplines. Practicing spiritual disciplines helps bring us closer to God and should allow us to understand His will and then put it into practice through the power of the Spirit.

All year we concentrated on four disciplines: Prayer, God's Word, Worship, and Service. The students focused on a variety of activities both in school and at home encouraging the development of these four disciplines in their lives. It is our prayer that these disciplines will continue to grow and flourish in the hearts and lives of our students.

As our celebration draws to a close the first weekend of June 2016, we look forward to commemorating the many blessings God has given us throughout the past 150 years. On Friday night, June 3, families from the congregation and school, as well as alumni will be celebrating with a picnic and bonfire. An alumni reception is



***Rev. Willis McCall***



***About A Mile  
Adam, Luke, and Levi Klutiny***



***Becki Toth***



planned for Saturday night at the Concordia Haven I dining room. Culminating at a special worship service on Sunday, St. Luke congregation will be honored for all of her support through the generations, with a dinner afterwards.

It is our hope and prayer that God will continue to bless the school and her ministry. May we always remain faithful to His Word educating all of His little lambs and continuing to provide "A Truly Higher Education."



***St. Luke Lutheran Church and School 2015-2016***

## ***Roster of Pastors***

|                         |              |             |
|-------------------------|--------------|-------------|
| Rev. Adolph Pohl        | 1867-1869    |             |
| Rev. Friedrich Wilhelm  | 1870-1891    |             |
| Rev. C. Engelder        | 1891-1903    |             |
| Rev. Theodore Andree    | 1903-1919    |             |
| Rev. Walter Pifer       | 1920-1924    |             |
| Rev. Herman Bielenberg  | 1925-1926    |             |
| Rev. Walter Hofius      | 1927-1954    |             |
| Rev. Louis Kaufmann     | 1955-1960    |             |
| Rev. Gerhard Schmoock   | 1960-1976    |             |
| Rev. Donald Meyer       | 1977-1980    |             |
| Rev. Barry Keurulainen  | 1982-Present |             |
| Rev. William Schneider  | 1986-1990    | (Associate) |
| Rev. Wayne Frederickson | 1991-1993    | (Associate) |
| Rev. James Beversdorf   | 1995-1999    | (Associate) |
| Rev. Jason Hoerth       | 2003-2011    | (Associate) |
| Rev. Matthew Barry      | 2012-Present | (Associate) |

## ***Roster of Teachers***

|                        |                     |  |
|------------------------|---------------------|--|
| Rev. Adolph Pol        | 1867-1869           |  |
| Rev. Friedrich Wilhelm | 1870-1886           |  |
| Mrs. Friedrich Wilhelm | (Assistant Teacher) |  |
| Miss Emma Krauss       | (Assistant Teacher) |  |

Rev. J. Heinzelman  
Mr. Carl Dorschel  
(vicars), Mr. William Bliese  
Mr. Valentin Koch  
Mr. F. Kunkel

These men were pastoral assistants primarily assistants teaching school, who stayed for no more than one year.

|                          |           |  |
|--------------------------|-----------|--|
| Mr. H.K. Malich          | 1886-1887 |  |
| Rev. Friedrich Wilhelm   | 1887-1888 |  |
| Mr. Henry Lensner        | 1888-1895 |  |
| Rev. C. Engelder         | 1895-1897 |  |
| Miss Bertha Fleckenstein | 1897-1900 |  |
| Miss Maria Wilhelm       | 1900-1902 |  |

|                         |                                          |
|-------------------------|------------------------------------------|
| Miss Martha Dorn        | 1902-1903                                |
| Rev. Theodore Andree    | 1903-1912                                |
| Mr. Arthur Seils        | 1912-1913                                |
| Miss Louisa Frederick   | 1913-1914 (Mrs. Oscar Follstaedt)        |
| Mr. Martin Mueller      | 1914-1917 (called into military service) |
| Rev. Theodore Andree    | 1917-1919                                |
| Mr. Martin Mueller      | 1919-1926                                |
| Mr. Ernest Ahrendt      | 1926-1927 (Seminary student, St. Louis)  |
| Mr. Otto Nicol          | 1927-1963 (Principal)                    |
| Miss Mary Jean Borer    | 1956-2001 (Mrs. Donald Montag)           |
| Miss Joanne Eisenberg   | 1961-1962                                |
| Miss Wyaneta Timm       | 1961-1963                                |
| Miss Alma Gretta        | 1962-1963                                |
| Mr. Kenneth Hinz        | 1963-1973 (Principal 1966-1967)          |
| Mr. Francis Camann      | 1963-1966 (Principal)                    |
| Miss Ruth Lobeck        | 1963-1967                                |
| Mrs. Alex Simpson       | 1966-1967 (Substitute first semester)    |
| Mr. Robert Flesch       | 1967-1970 (Principal)                    |
| Miss Lois Boyer         | 1967-1972 (Mrs. Kenneth Hinz)            |
| Mr. Bruce Walkmaster    | 1970-1975 (Principal)                    |
| Miss Mona Bornhoeft     | 1972-1973                                |
| Mr. Kenneth Schroeder   | 1973-1980 (Principal 1975-1980)          |
| Miss Phyllis Thielke    | 1973-1974                                |
| Mr. David Dembeck       | 1974-1979                                |
| Mrs. Valorie Dembeck    | 1974-1979                                |
| Mr. Mike Henkes         | 1975-1977                                |
| Mrs. Nancy Sander       | 1977-February, 1980                      |
| Mr. Mark Wilt           | 1979-Present (Principal 1980-Present)    |
| Mrs. Cynthia Wilt       | 1979-1981                                |
| Mrs. Karen Doerr        | February 1980-1987 (Mrs. Karen Hickey)   |
| Mrs. Cynthia Maier      | 1980-1981                                |
| Miss Karen Shearer      | 1981-1982 (Mrs. Daniel Russo)            |
| Miss Cheryl Honoree     | 1981-1987                                |
| Miss Brenda Fett        | 1982-Present                             |
| Mrs. Andrea Keurulainen | 1983-2015                                |
| Mrs. Cynthia Maier      | 1984-2003                                |
| Mrs. Cynthia Wilt       | 1987-1988 (Preschool)                    |
| Mr. Horst Kannenwischer | 1987-1992                                |
| Mrs. Janet Toth         | 1988-1997 (Preschool)                    |
| Mrs. Kathy Wimer        | 1988-1997 (Preschool)                    |

|                           |                                |
|---------------------------|--------------------------------|
| Mrs. Dale Kathleen Albert | 1989-1998 (Art)                |
| Mrs. Carol Jancosko       | 1989-1997 (Physical Education) |
| Mrs. Sharon Perschke      | 1991-2012 (Music)              |
| Mrs. Cynthia Wilt         | 1991-2012                      |
| Miss Jamie Grace          | 1992-1995                      |
| Mrs. Monica Rummel        | 1992-1997                      |
| Mrs. Linda McCall         | 1992-Present (Preschool)       |
| Mr. Paul Herring          | 1993-1996                      |
| Mrs. Sara Frndak          | 1994-2001                      |
| Mr. Mark Willert          | 1995-1998                      |
| Mr. Lee Hoovler           | 1995-1998 (Science)            |
| Mrs. Bonnie Beversdorf    | 1995-2000                      |
| Mrs. Susanne Gillespie    | 1996-Present                   |
| Mrs. Kathryn Willert      | 1996-2006                      |
| Mrs. Terri Delzer         | 1997-1999                      |
| Mrs. Norma Gaston         | 1997-Present (Math)            |
| Mrs. Karen Gibbon         | 1997-2002 (Preschool)          |
| Mr. Thomas Bird           | 1997-1998 (Physical Education) |
| Mr. Ralph Goldinger       | 1997-1998 (History)            |
| Miss Rebecca Toth         | 1997-2003 (Preschool)          |
| Mrs. Pat Neubert          | 1998-2014 (Physical Education) |
| Mrs. Elaine Heitzer       | 1998-2000 (Art)                |
| Mrs. Cynthia Smith        | 1998-Present                   |
| Mrs. Kristie Gizienski    | 1999-2014                      |
| Mrs. Susan Burtner        | 2000-Present (Art)             |
| Mrs. Sandra Markle        | 2000-Present                   |
| Miss Halee McClain        | 2001-2004                      |
| Mrs. Stacy Fanton         | 2002-Present                   |
| Mrs. Gail Robinson        | 2002-Present                   |
| Mr. Eric Joseph           | 2002-2003 (Computer)           |
| Mrs. Kelly Leggens        | 2003-2006 (Music)              |
| Mrs. Janet Girdano        | 2003-2004 (Preschool)          |
| Mrs. Judy Abernathy       | 2004-Present                   |
| Mrs. Michelle Marino      | 2004-2008 (Preschool)          |
| Mrs. Diane Beckstead      | 2006-Present (Music)           |
| Ms. Lili Byrer            | 2006-2013 (Science)            |
| Mrs. Shayne Garcia-Bish   | 2011-Present                   |
| Miss Amanda Paulsen       | 2012-2013 (Music)              |
| Mrs. Angela Turner        | 2012-Present                   |
| Mrs. Barbara Ansell       | 2013-2014 (Preschool)          |

|                       |                                   |
|-----------------------|-----------------------------------|
| Mr. Michael McKinney  | 2013-2015 (Music)                 |
| Mrs. Angelina Bachman | 2014-Present (Preschool)          |
| Mrs. Melissa Busler   | 2014-Present (Science)            |
| Mrs. Kelly Carney     | 2014-Present (Physical Education) |
| Mr. Charles Tompkins  | 2014-Present (Physical Education) |

---

## **150<sup>TH</sup> ANNIVERSARY COMMITTEE**

**Sharon Ambrose  
Lynn Capestrani  
Joyce Emmel  
Brenda Fett  
Diane Lynn  
Michelle Rhodes  
Arlin Rummel  
Angela Turner  
Mark Wilt**

